

Dock High Stairs

INSTALLATION INSTRUCTIONS



BUILT
for **LIFE™**

IMPORTANT
READ THESE INSTRUCTIONS CAREFULLY
FOR SAFETY AND PROPER INSTALLATION



Contents

| | |
|--|--------------|
| Before You Begin | 3 |
| Crate Parts List | 4 |
| Packaged Hardware Contents. | 5 |
| Dock Stair Elevations | 6 |
| Step 1 Install Landing Anchors | 7 |
| Step 2 & 3 Attach Landing Mid Anchor Clip. | 8 |
| Step 4 & 5 Attach Side and Center Columns | 9 |
| Step 6 Assemble Center and Side Columns. | 10 |
| Step 7 Attach Cross Column Bracing | 11 |
| Step 8 Plumb the Columns Vertically | 12 |
| Step 9 & 10 Stair Assembly Attachment | 13 |
| Step 11, 12 & 13 Attach Front Pockets and Posts | 14 |
| Step 14, 15, 16 & 17 Assemble Levelers | 15 |
| Step 18 First Stair Step Installation | 16 |
| Step 19 Attach Handrail Post Pockets | 17 |
| Step 20 Insert Handrail Posts. | 18 |
| Step 21 Stair Handrail Panel Assembly | 19 |
| Step 22 Install Handrail Panels 1. | 20 |
| Step 23 Install Handrail Panels 2. | 21 |
| Step 24 Install Handrail Panels 3. | 22 |
| Step 25 Install Handrail Panels 4. | 23 |
| Step 26 Top Guardrail Installation | 24 |
| Step 27 Lower Guardrail Installation | 25 |
| Step 28 Optional Guardrail Wall Mounting Clip | 26 |
| Parts List | 27 |
| Part Diagrams | 28-29 |

BEFORE YOU BEGIN

CHECK DELIVERY

Your dock stair has been carefully checked for completeness. However, upon receipt you should ensure you have received all parts and check for damage during shipping.

GENERAL SAFETY INFORMATION

We recommend two people when assembling this dock stair.

Some parts may have sharp edges, wear protective gloves.



Read this assembly instructions carefully before assembling this dock stair.

ADDITIONAL HARDWARE REQUIRED

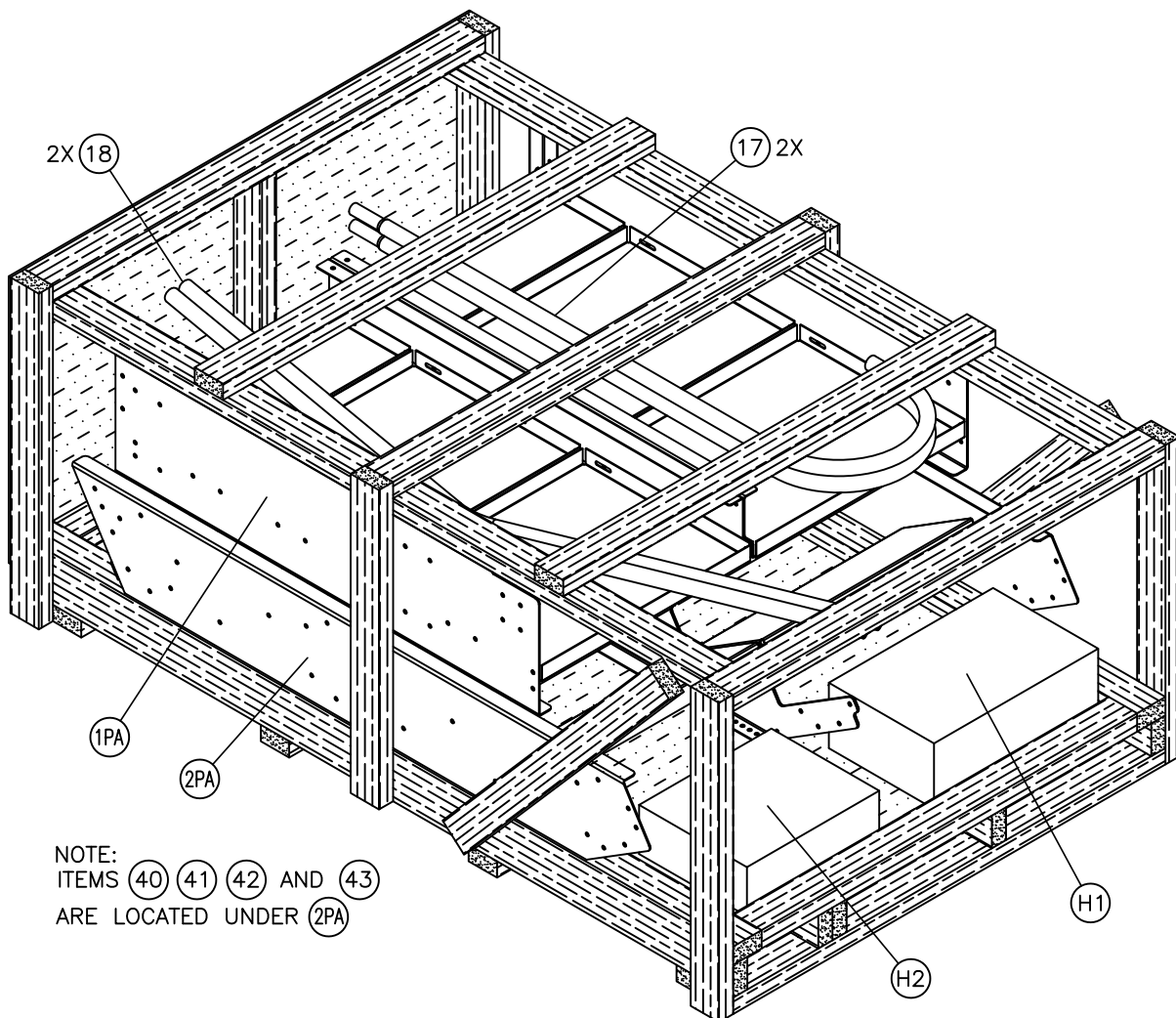
| <u>QTY</u> | <u>Description</u> |
|------------|--------------------|
| 20 | 1/2" Anchor bolts |

RECOMMENDED EQUIPMENT FOR INSTALLATION

- Forklift or other adequate lifting device for 400 lbs
- 3/4" End wrench for the anchors
- 9/16" End wrench
- 9/16" Socket and ratchet (A cordless impact driver would be the best)
- 5/16" Allen wrench
- Alignment bar to help with aligning the holes
- 2' Level
- 6" Level
- Rubber Mallet
- Box Cutter
- Tape Measure

PACKAGED CRATE CONTENTS

| CRATE PARTS LIST | | | |
|------------------|-----|-------------|---------------------------------|
| ITEM | QTY | PART NUMBER | DESCRIPTION |
| 1PA | 1 | 750002-1PA | PRE ASSEMBLED LANDING |
| 2PA | 1 | 750002-2PA | PRE ASSEMBLED STAIRCASE |
| 17 | 2 | 750002-17 | TOP GUARDRAIL WITH LOOP |
| 18 | 2 | 750002-18 | TOP GUARDRAIL WITH CORNER JOINT |
| 40 | 2 | 750002-40 | SOLID PANEL – LANDING |
| 41 | 2 | 750002-41 | SOLID PANEL – TRANSITION |
| 42 | 2 | 750002-42 | SOLID PANEL – UPPER STAIR |
| 43 | 2 | 750002-43 | SOLID PANEL – LOWER STAIR |
| H1 | 1 | 750002H1 | HARDWARE CARTON |
| H2 | 1 | 750002H2 | HARDWARE CARTON |





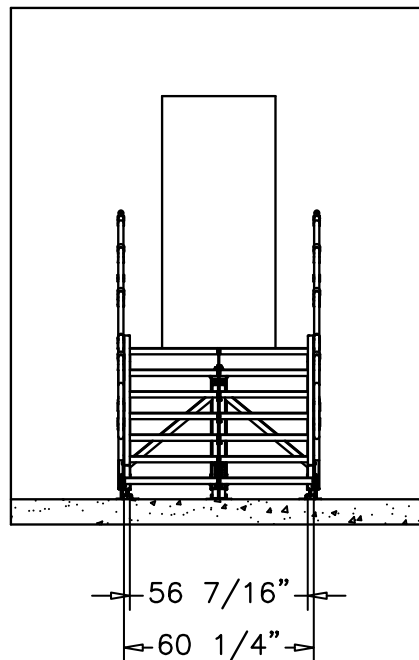
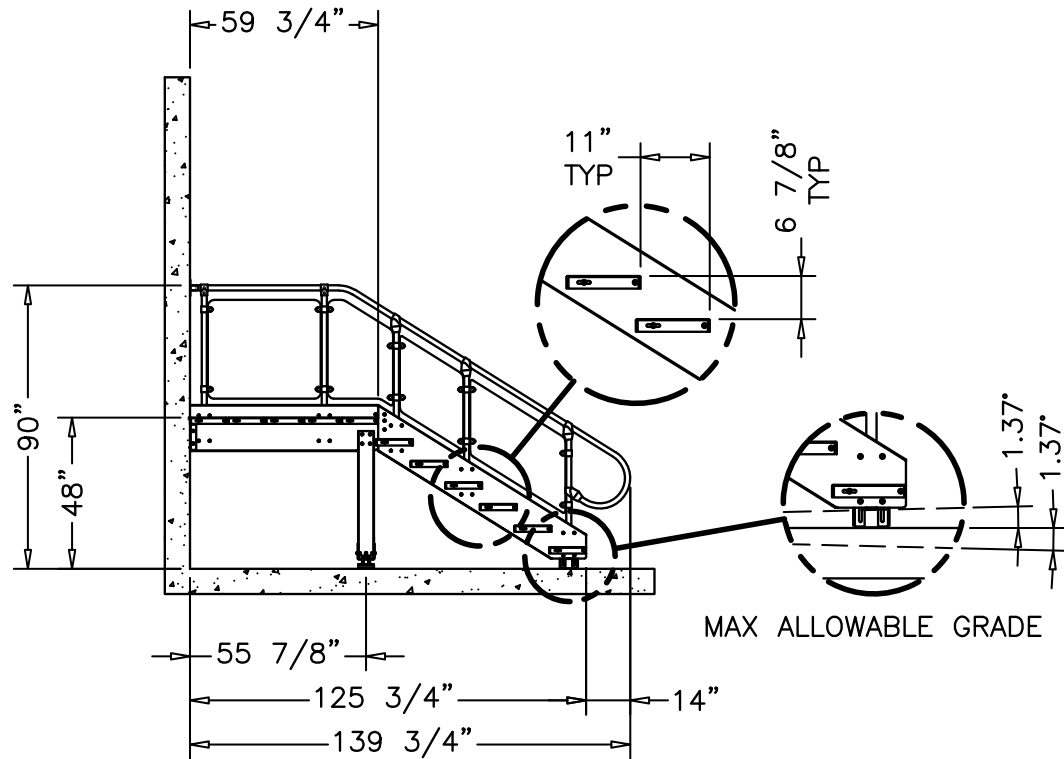
PACKAGED HARDWARE CONTENTS

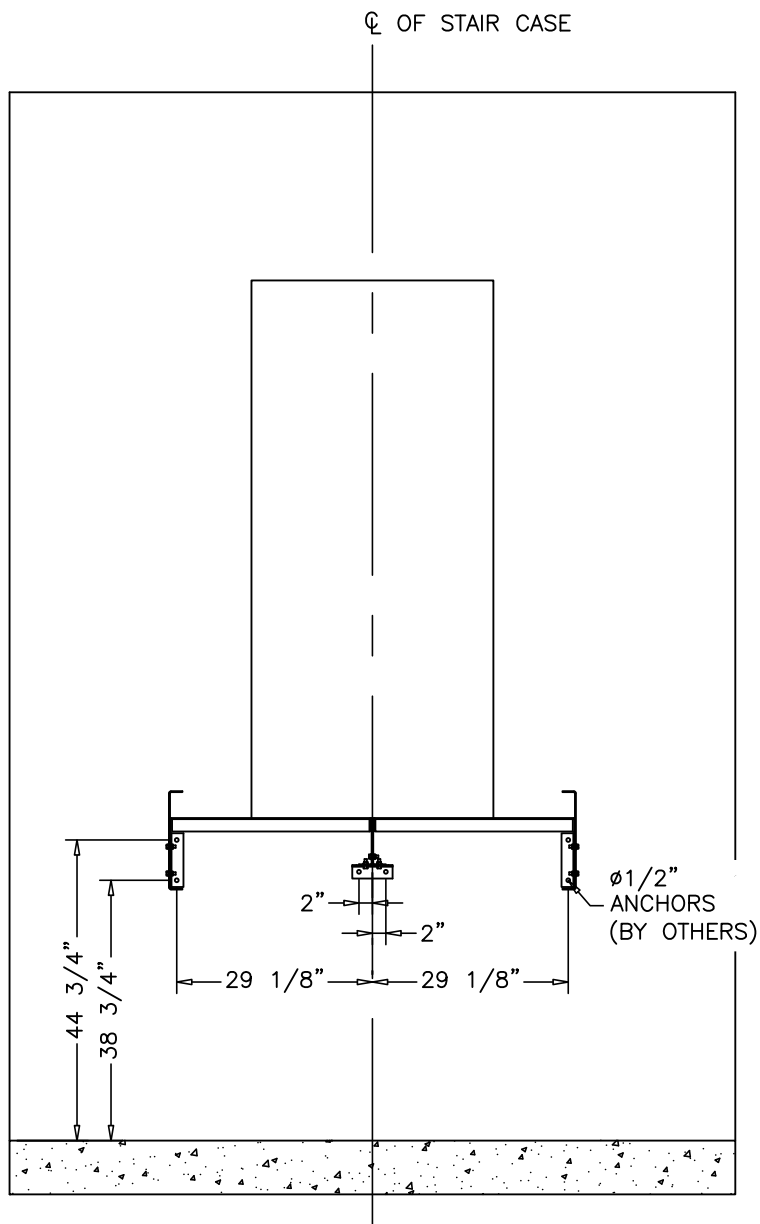
| 750002H1 PARTS LIST | | | |
|---------------------|-----|----------------|--|
| ITEM | QTY | PART NUMBER | DESCRIPTION |
| 5 | 1 | 750002-5 | CENTER LANDING COLUMN X 36 9/16" |
| 6 | 2 | 750002-6 | SIDE LANDING COLUMN X 39 1/2" |
| 7 | 2 | 750000-7-37.62 | STAIR CROSS BRACE ANGLE X 37 5/8" |
| 36L | 1 | 750000-36LH | DOCK STAIR WARNING STRIPE ANGLE |
| 36R | 1 | 750000-36RH | DOCK STAIR WARNING STRIPE ANGLE |
| A | 2 | 280186-40.5 | Ø1 5/8" HANDRAIL POST X 40 1/2" |
| B | 4 | 280186-41.62 | Ø1 5/8" HANDRAIL POST X 41 1/2" |
| C | 4 | 280186-49 | Ø1 5/8" HANDRAIL POST X 49" |
| D | 2 | 291426 | GRIP STRUT STAIR TREAD 11 3/4" X 2" X 30" LONG |

| 750002H2 PARTS LIST | | | |
|---------------------|-----|-------------|---|
| ITEM | QTY | PART NUMBER | DESCRIPTION |
| 10 | 1 | 750000-10 | LANDING TO CONCRETE WALL CLIP |
| 11 | 2 | 750000-11 | CENTER COLUMN CLIP |
| 12 | 2 | 750002-12 | STAIR STRINGER TO LANDING CHANNEL CLIP |
| 16 | 2 | 750000-16 | HANDRAIL WALL MOUNTING CLIP |
| 27 | 3 | 750000-27 | DOCK HIGH STAIRCASE COLUMN BASE PLATE |
| 28 | 3 | 750000-28 | DOCK HIGH STAIRCASE COLUMN SHOE PLATE |
| 30 | 1 | 750000-30 | CENTER COLUMN TOP CAP PLATE |
| 32 | 2 | 750002-32 | STRINGER ADJUSTABLE ANCHOR CLIP |
| 33L | 1 | 750002-33LH | MID STRINGER ADJUSTABLE ANCHOR CLIP |
| 34R | 1 | 750002-33RH | MID STRINGER ADJUSTABLE ANCHOR CLIP |
| 34 | 8 | 750000-34 | STAIR HANDRAIL CLIP |
| 35 | 2 | 750000-35 | STAIR HANDRAIL ANCHOR CLIP |
| E | 4 | 290715 | TYPE 10-7 - SINGLE SOCKET TEE |
| F | 8 | 291556 | TYPE 29-7 - 30°-60° SINGLE SOCKET TEE |
| G | 8 | 291686 | HANDRAIL END CLAMP FITTING |
| H | 24 | 750002-44 | HANDRAIL CLAMP FITTING |
| J | 4 | 291129 | 1 5/8" WEATHER PLUG END CAP |
| K | 25 | 290190 | #12-14 X 3/4" SELF-DRILLING FASTENER W/SW |
| L | 130 | 291292 | 3/8" X 1" SERRATED FLANGE HEX HEAD BOLT GRADE 8 |
| M | 6 | 291284 | 3/8" X 2 1/2" HEX HEAD BOLT W/SW GRADE 8 |
| N | 155 | 290961 | 3/8" SERRATED FLANGE HEX NUT |

NOTE: ADDITIONAL HARDWARE MAY BE PROVIDED AS A CONVENIENCE

DOCK STAIR ELEVATIONS



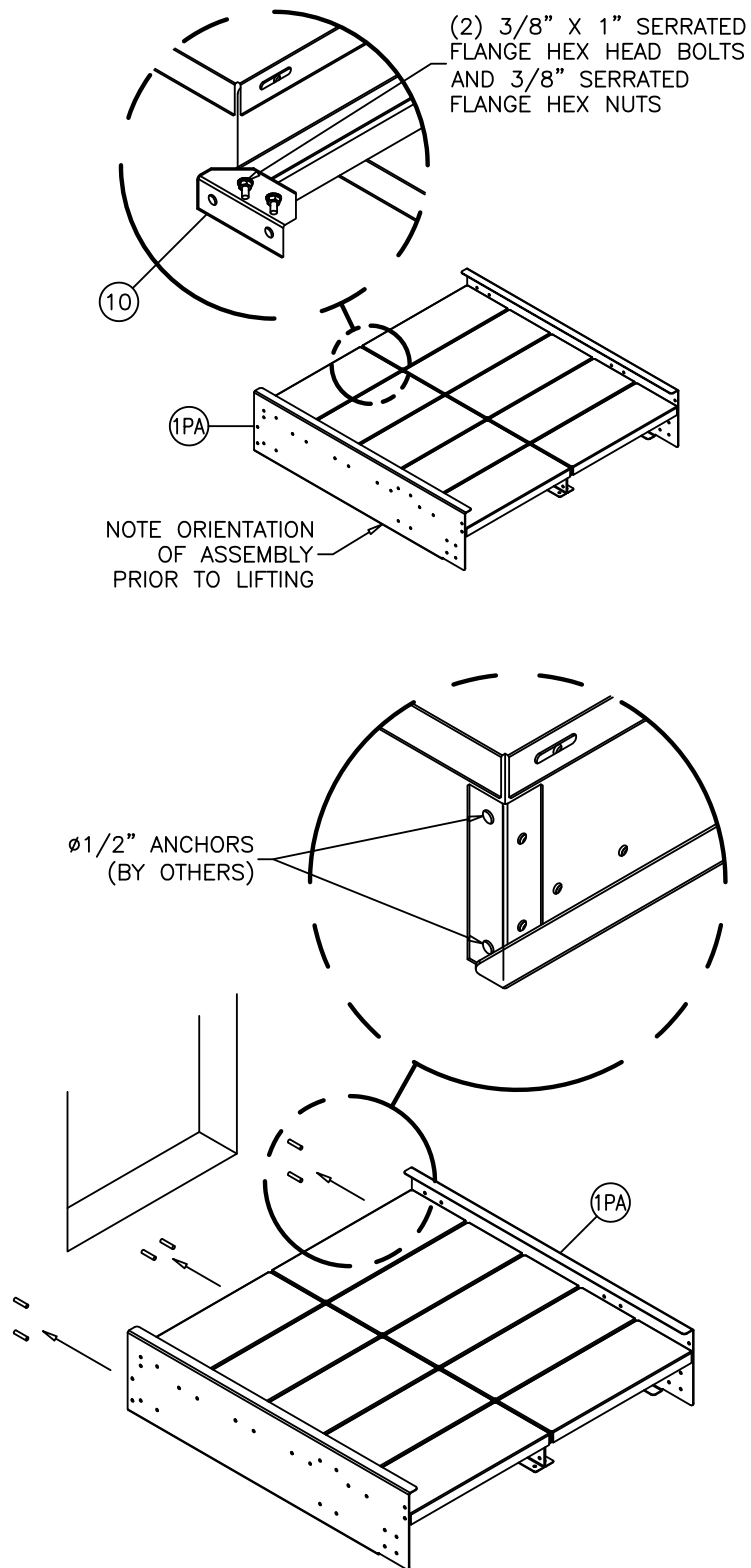


STEP 1

INSTALL LANDING ANCHORS

INSTALL (6) Ø1/2" WALL ANCHORS (NOT INCLUDED) AT THE LOCATIONS SHOWN.

NOTE:
EXAMPLE SHOWS THE STAIRS CENTERED ON THE DOORWAY, BUT THEY MAY BE OFFSET TO EACH SIDE AS NEEDED



STEP 2

ATTACH LANDING
MID ANCHOR CLIP

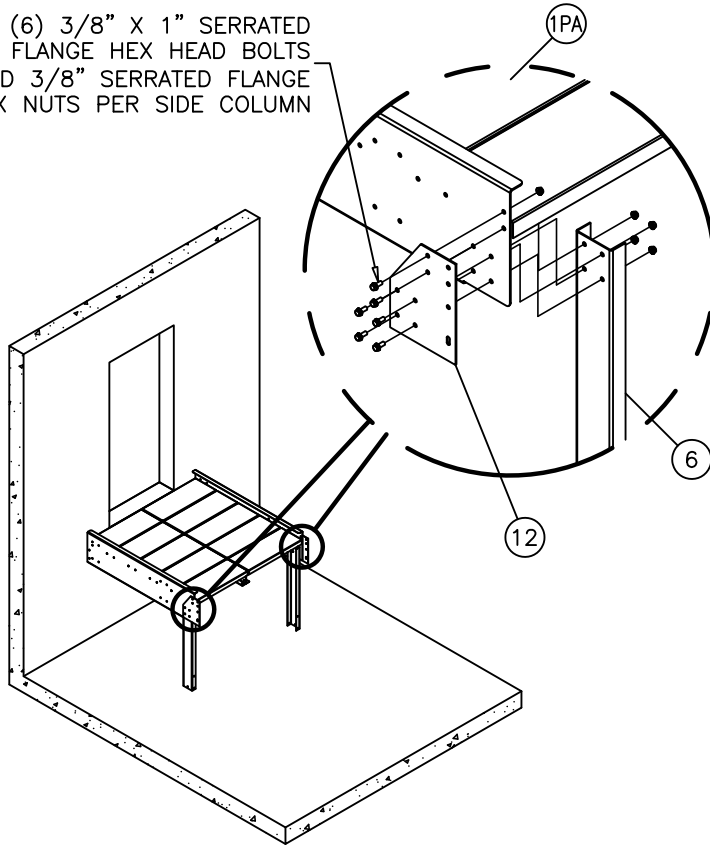
STEP 3

ANCHOR LANDING TO WALL.
ENSURE LANDING IS LEVEL
PRIOR TO TIGHTENING ANCHOR
BOLTS.



USE A LIFTING DEVICE
TO LOCATE AND HOLD
LANDING ASSEMBLY
IN PLACE UNTIL
COLUMNS ARE PLACED

(6) 3/8" X 1" SERRATED
FLANGE HEX HEAD BOLTS
AND 3/8" SERRATED FLANGE
HEX NUTS PER SIDE COLUMN

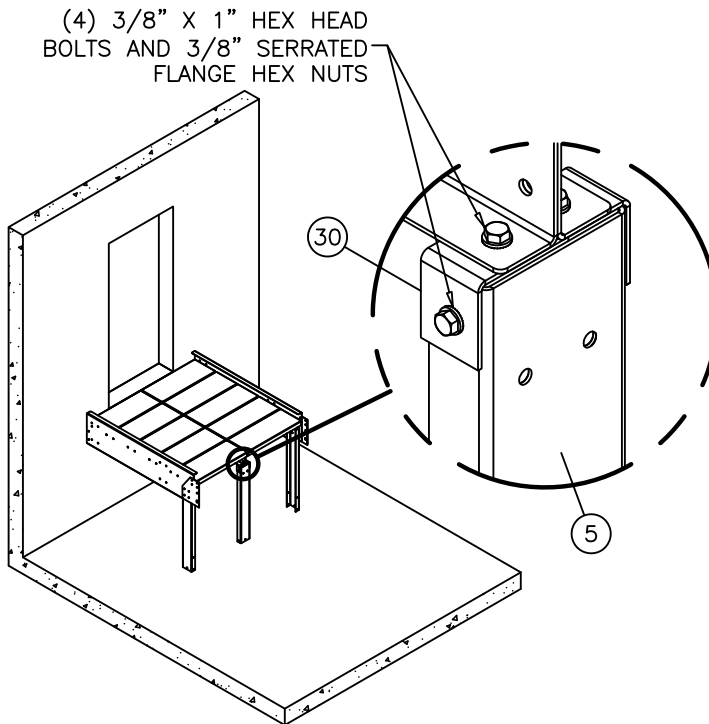


STEP 4

ATTACH SIDE COLUMNS (6)
TO (1PA) WITH CLIP (12) AS
SHOWN

LEAVE ALL BOLTS LOOSE
TO ALLOW ADJUSTMENTS
FOR LEVELING AFTER
COLUMNS ARE INSTALLED

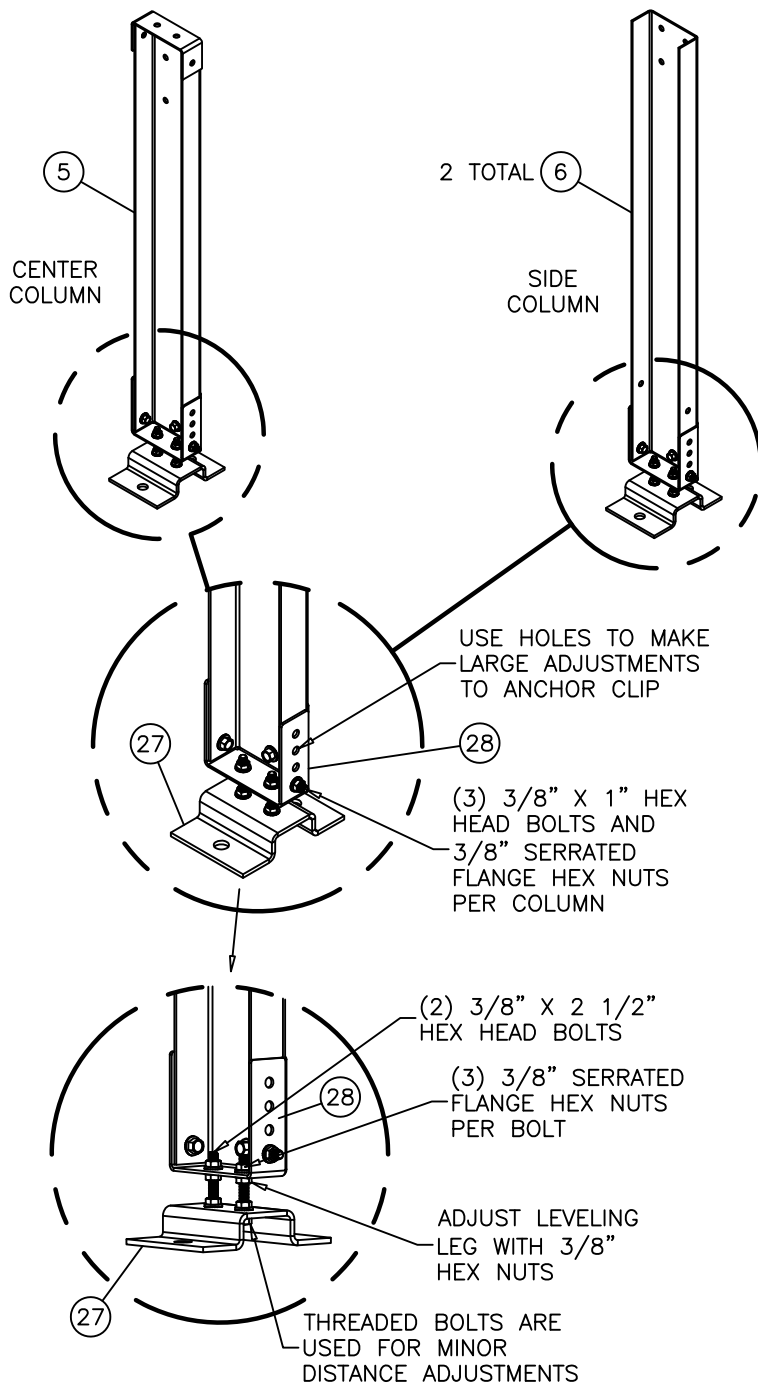
(4) 3/8" X 1" HEX HEAD
BOLTS AND 3/8" SERRATED
FLANGE HEX NUTS



STEP 5

ATTACH CENTER COLUMN (5)
AND CAP PLATE (30) TO (1PA)
AS SHOWN

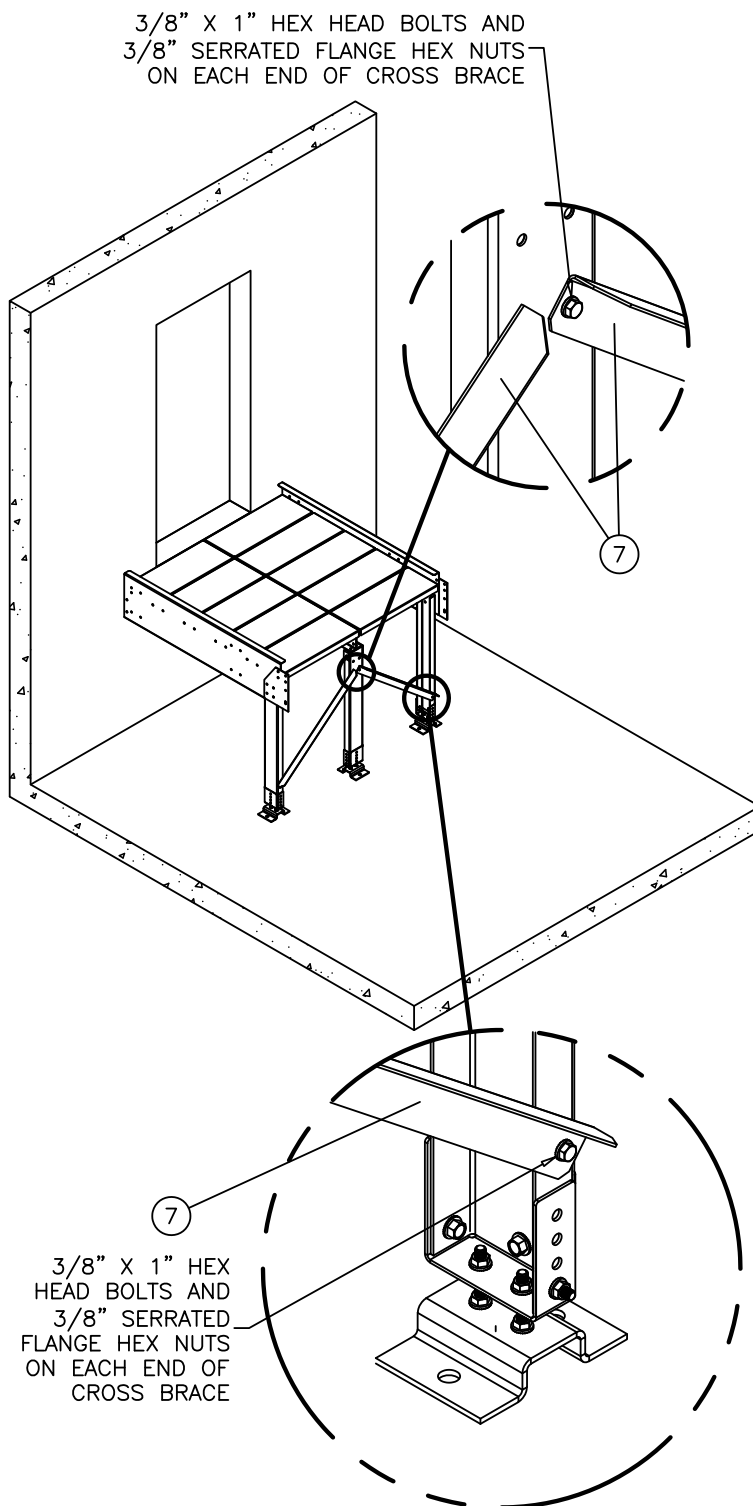
LEAVE ALL BOLTS LOOSE
TO ALLOW ADJUSTMENTS
FOR LEVELING AFTER
COLUMNS ARE INSTALLED



STEP 6

ASSEMBLE THE CENTER AND SIDE COLUMN ANCHOR CLIPS

LEAVE ALL BOLTS LOOSE TO ALLOW ADJUSTMENTS FOR LEVELING AFTER COLUMNS ARE INSTALLED

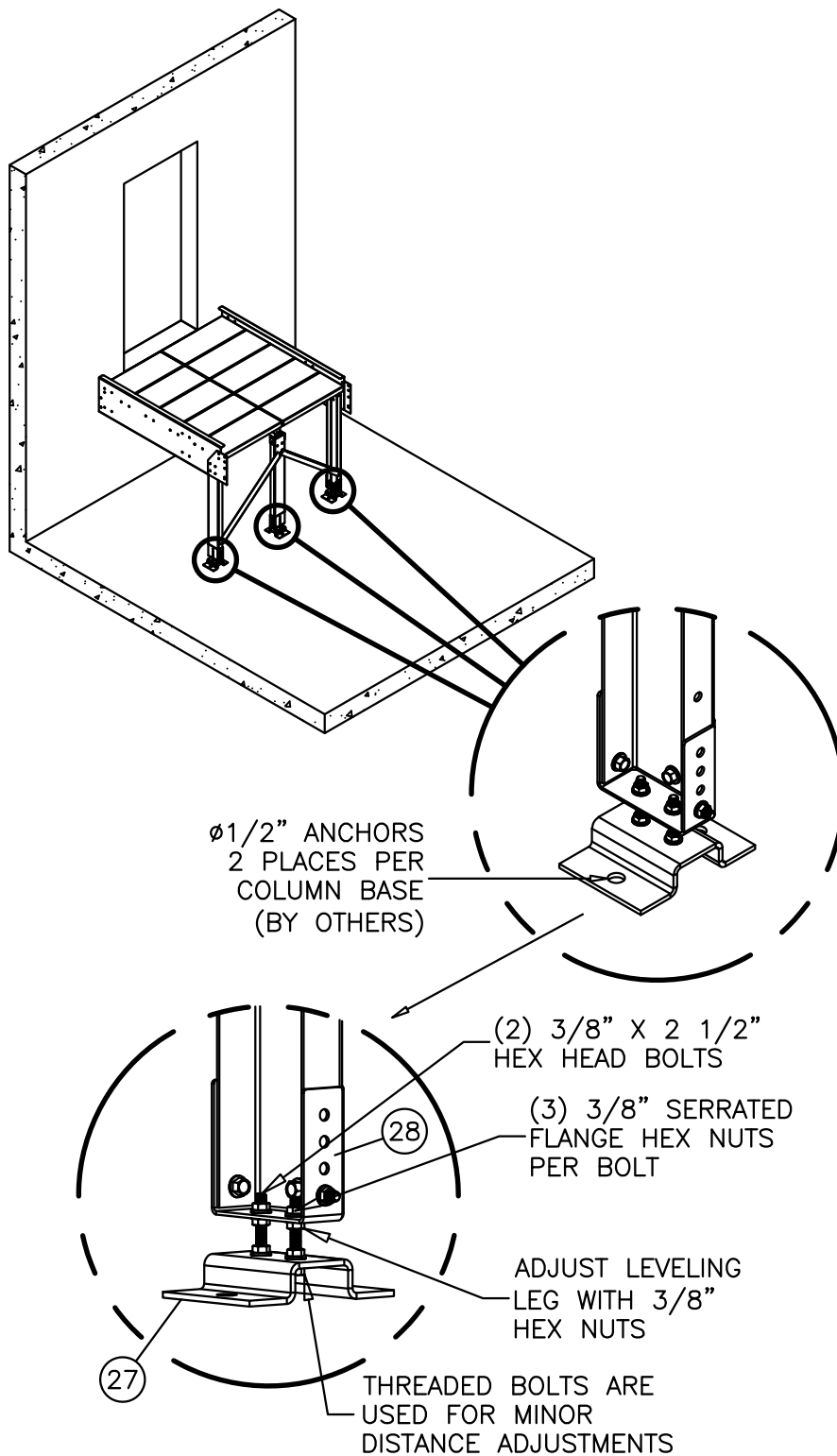


STEP 7

ATTACH CROSS COLUMN

BRACING 7

**LEAVE ALL BOLTS LOOSE
TO ALLOW ADJUSTMENTS
FOR LEVELING AFTER
COLUMNS ARE INSTALLED**



STEP 8

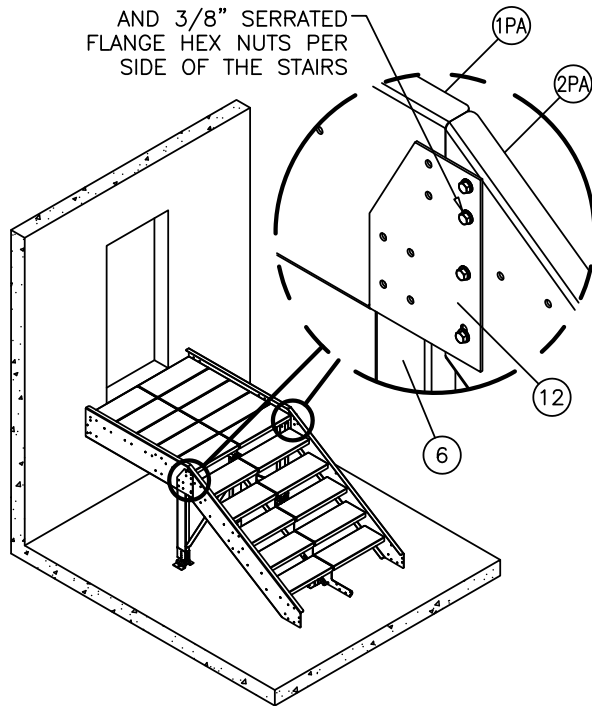
AFTER COLUMNS AND BRACING ARE INSTALLED, PLUMB THE COLUMNS VERTICALLY

INSTALL ANCHORS FOR THE COLUMN MOUNTING FEET (6 PLACES)

AFTER INSTALLING COLUMN ANCHORS, MAKE ADJUSTMENTS TO COLUMN FOOTINGS TO ENSURE THE LANDING IS LEVEL

TIGHTEN ALL BOLTS FROM PREVIOUS STEPS AFTER LEVELED

(4) 3/8" X 1" SERRATED
FLANGE HEX HEAD BOLTS
AND 3/8" SERRATED
FLANGE HEX NUTS PER
SIDE OF THE STAIRS



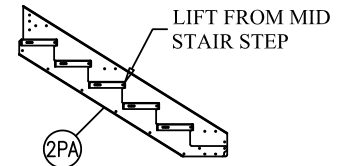
STEP 9

STAIR ASSEMBLY ATTACHMENT

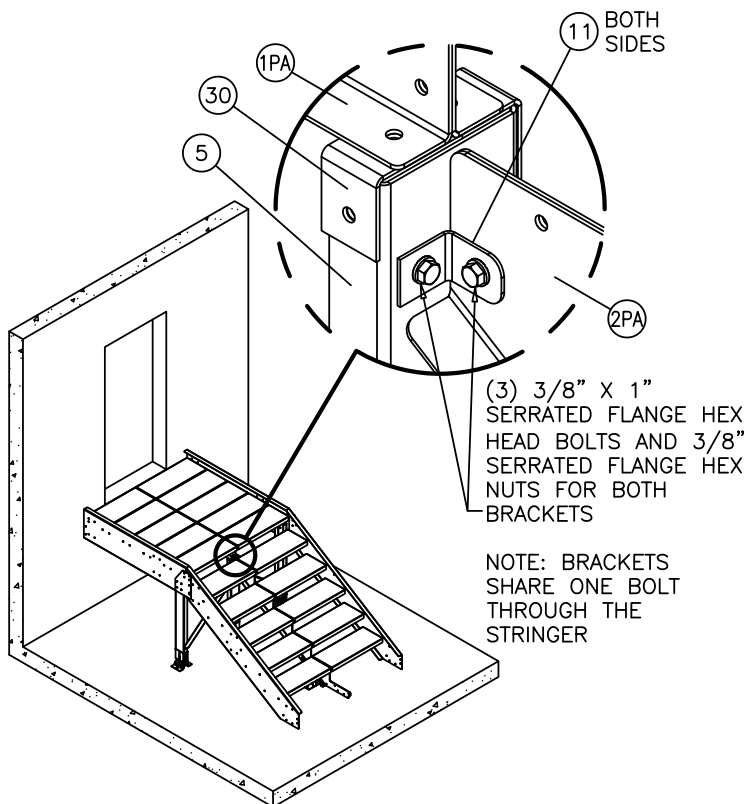


USE A LIFTING DEVICE
TO LOCATE AND HOLD
THE STAIR ASSEMBLY

(2PA) IN PLACE UNTIL
FIRMLY SECURED



LEAVE ALL BOLTS LOOSE
TO ALLOW ADJUSTMENTS
FOR LEVELING AFTER
ANCHOR CLIPS ARE
INSTALLED



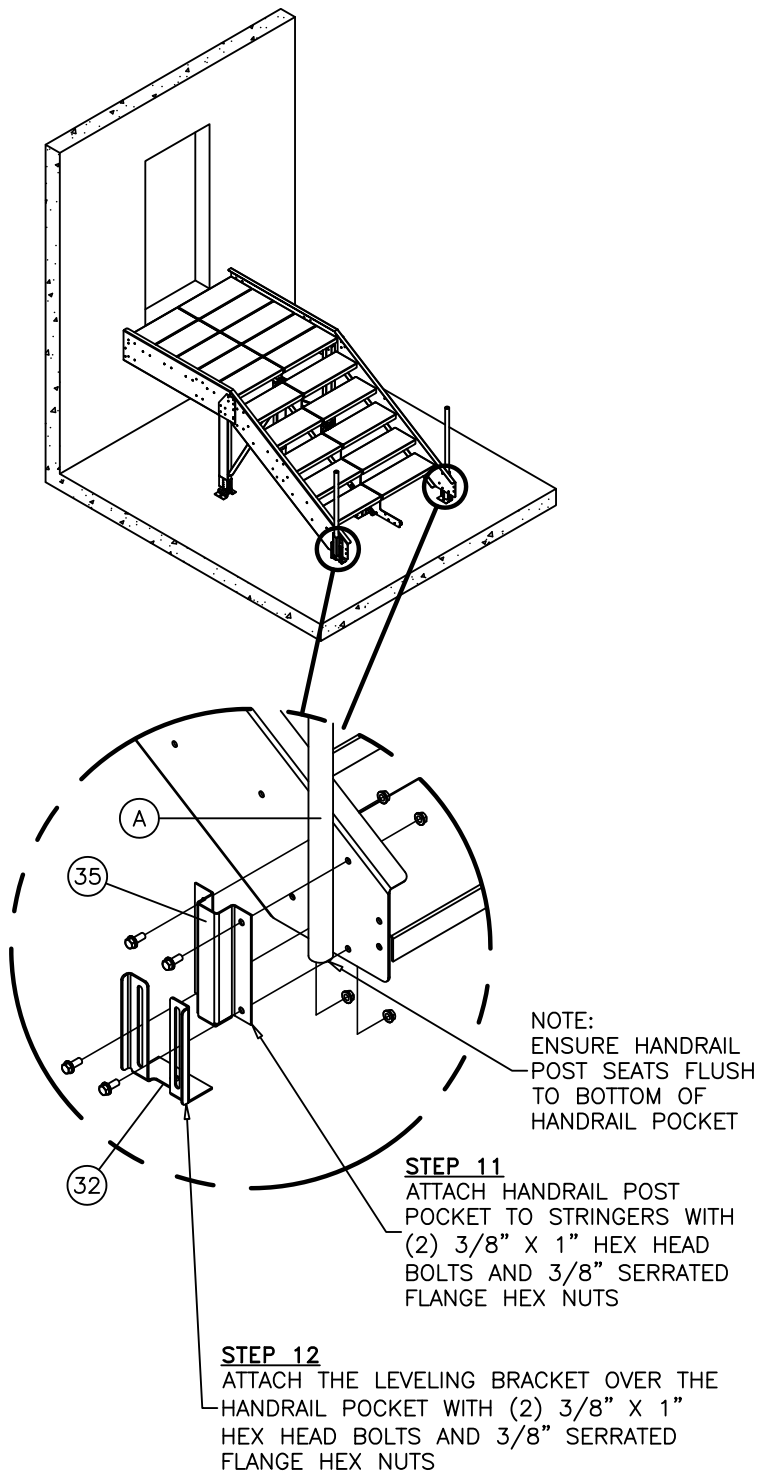
(3) 3/8" X 1"
SERRATED FLANGE HEX
HEAD BOLTS AND 3/8"
SERRATED FLANGE HEX
NUTS FOR BOTH
BRACKETS

NOTE: BRACKETS
SHARE ONE BOLT
THROUGH THE
STRINGER

STEP 10

STAIR ASSEMBLY ATTACHMENT
TO CENTER COLUMN.

INSTALL BRACKET (11)
AS SHOWN



STEP 11

ATTACH TOP TWO BOLTS OF HANDRAIL POST BRACKET (35) TO STRINGER
KEEP BOLTS LOOSE

STEP 12

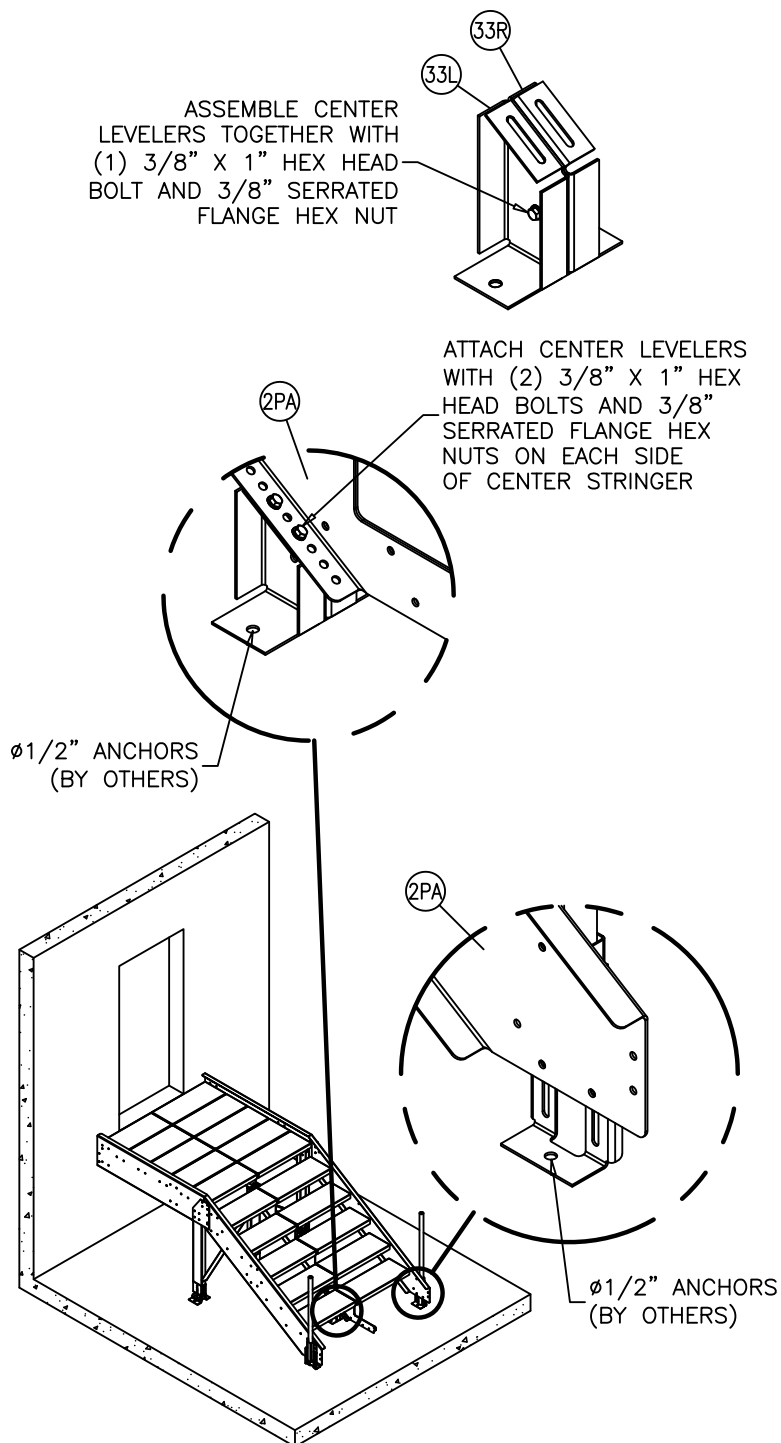
ATTACH THE LEVELING BRACKET (32) OVER THE HANDRAIL POCKET (35) AND SECURE TO STRINGER WITH TWO BOLTS
KEEP BOLTS LOOSE

STEP 13

PLACE HANDRAIL POST (A) INTO HANDRAIL POCKET (35). ENSURE POST SITS FLUSH TO BOTTOM OF HANDRAIL BRACKET. **KEEP BOLTS LOOSE**

NOTE:
HANDRAIL POST POCKET IS DESIGNED TO CLAMP AROUND POST WHEN THE POCKET IS SECURELY BOLTED TO THE STRINGER.

| | LENGTH |
|---|---------|
| A | 40 1/2" |



STEP 14

ASSEMBLE 33L AND 33R USING CENTER BOLT AS SHOWN

STEP 15

PLACE CENTER LEVELER UNDER THE CENTER STRINGER, ATTACH WITH TWO BOLTS. **KEEP BOLTS LOOSE**

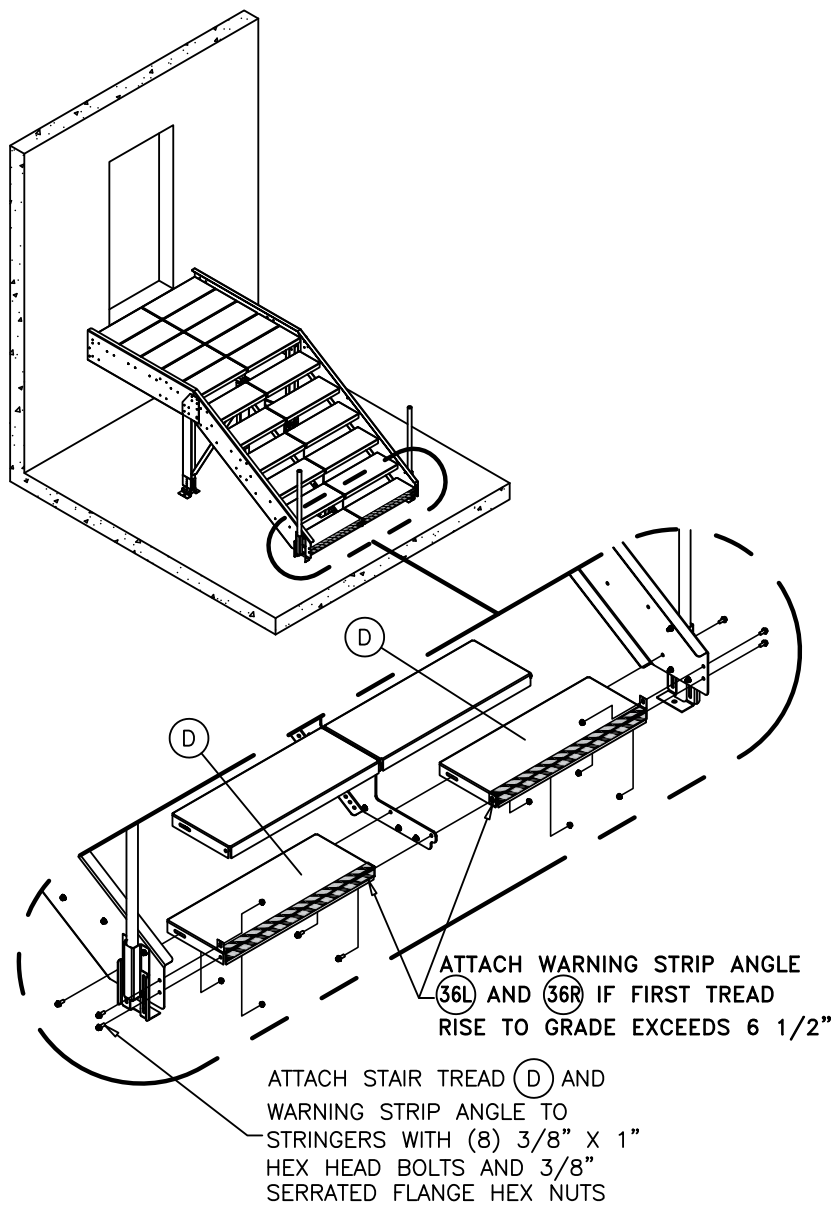
STEP 16

LEVEL THE STAIR USING BOTH THE SIDE AND CENTER LEVELERS. ENSURE ALL LEVELERS ARE FLUSH TO GRADE AND THE VERTICAL HANDRAIL POST (A) IS PLUMB STRAIGHT

TIGHTEN ALL BOLTS FROM PREVIOUS STEPS ONCE LEVELED

STEP 17

INSTALL Ø1/2" ANCHORS IN LEVELERS (4 PLACES)

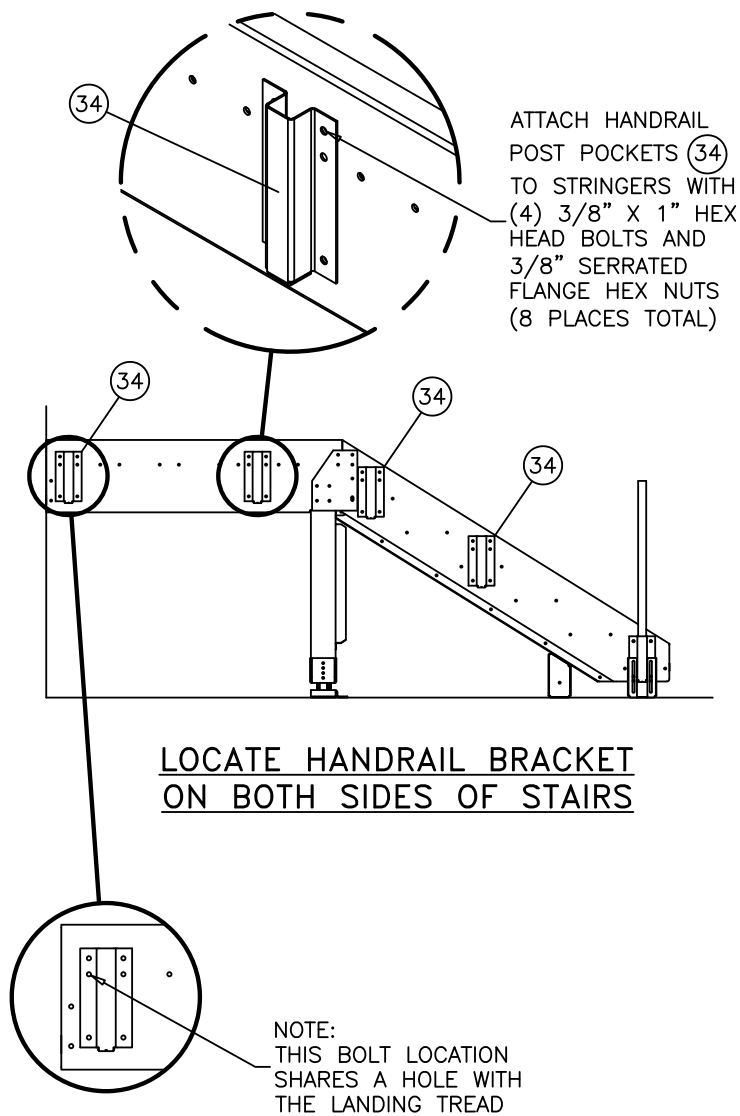


STEP 18

FIRST STAIR STEP INSTALLATION

ATTACH STAIR TREADS (D) TO FRONT OF (2PA)

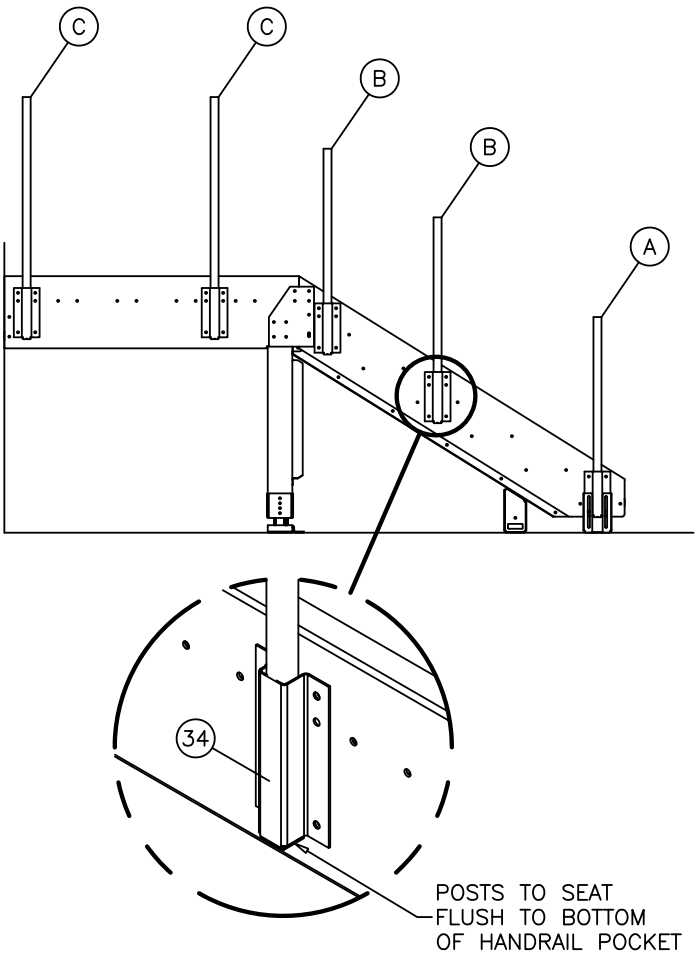
NOTE: IF WARNING STRIP ANGLES ARE REQUIRED, INSTALL (36L) AND (36R) AS YOU INSTALL STAIR TREADS (D)



STEP 19

ATTACH HANDRAIL POST POCKETS (34) TO STRINGER

LEAVE ALL BOLTS LOOSE TO UNTIL HANDRAIL POSTS ARE INSTALLED



LOCATE POSTS ON BOTH SIDES OF STAIRS

STEP 20

INSERT HANDRAIL POSTS

(B) AND (C)
INTO POCKETS (34)

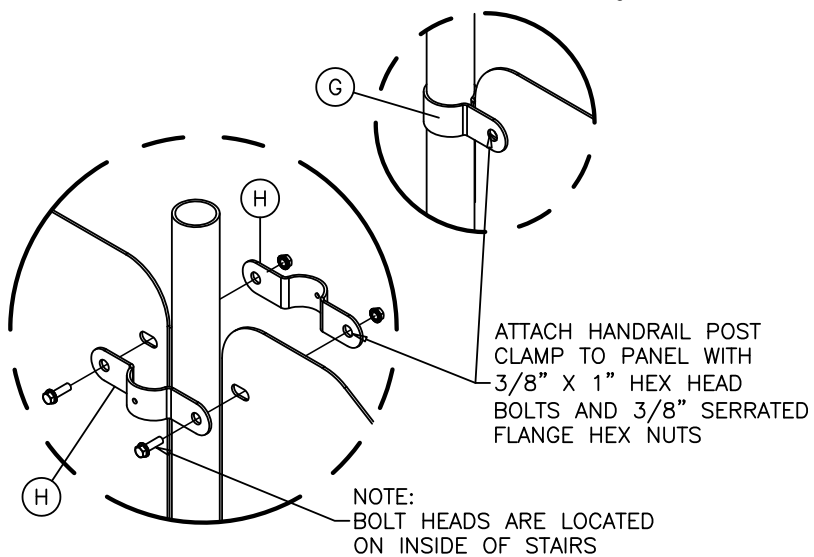
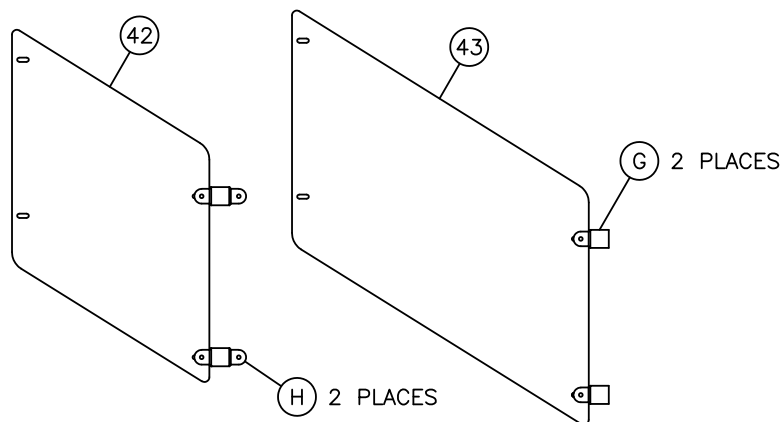
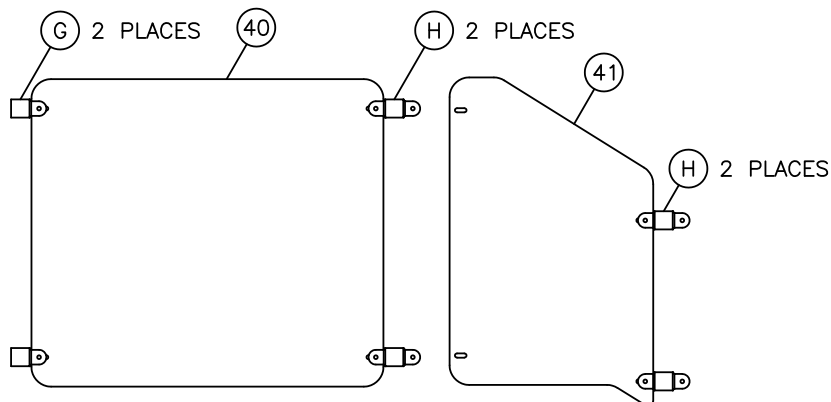
NOTE:
ENSURE HANDRAIL POST
SEATS FLUSH TO BOTTOM
OF HANDRAIL POCKET

HANDRAIL POST POCKET
IS DESIGNED TO CLAMP
AROUND POST WHEN THE
POCKET IS BOLTED TO
THE STRINGER.

**ENSURE POST IS VERTICALLY
STRAIGHT PRIOR TO
TIGHTENING BOLTS**

| | LENGTH |
|---|---------|
| A | 40 1/2" |
| B | 41 5/8" |
| C | 49" |

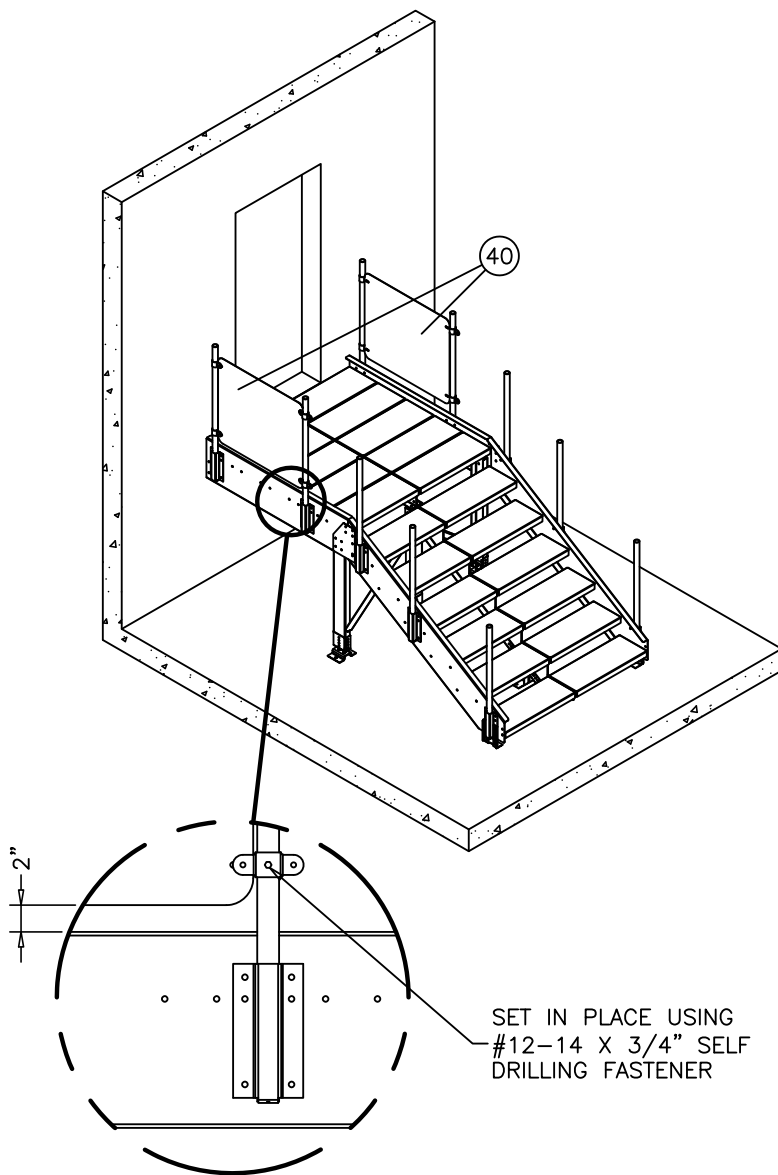
ATTACH HANDRAIL FITTINGS TO PANELS WITH 3/8" X 1" HEX HEAD BOLTS AND 3/8" SERRATED FLANGE HEX NUTS



STEP 21

ASSEMBLY HANDRAIL SOLID
PANELS (40) (41) (42) AND (43)
WITH FITTINGS (G) AND (H) AS
SHOWN

LEAVE ALL BOLTS LOOSE
TO ALLOW ADJUSTMENTS
FOR LEVELING AFTER
PANELS ARE INSTALLED

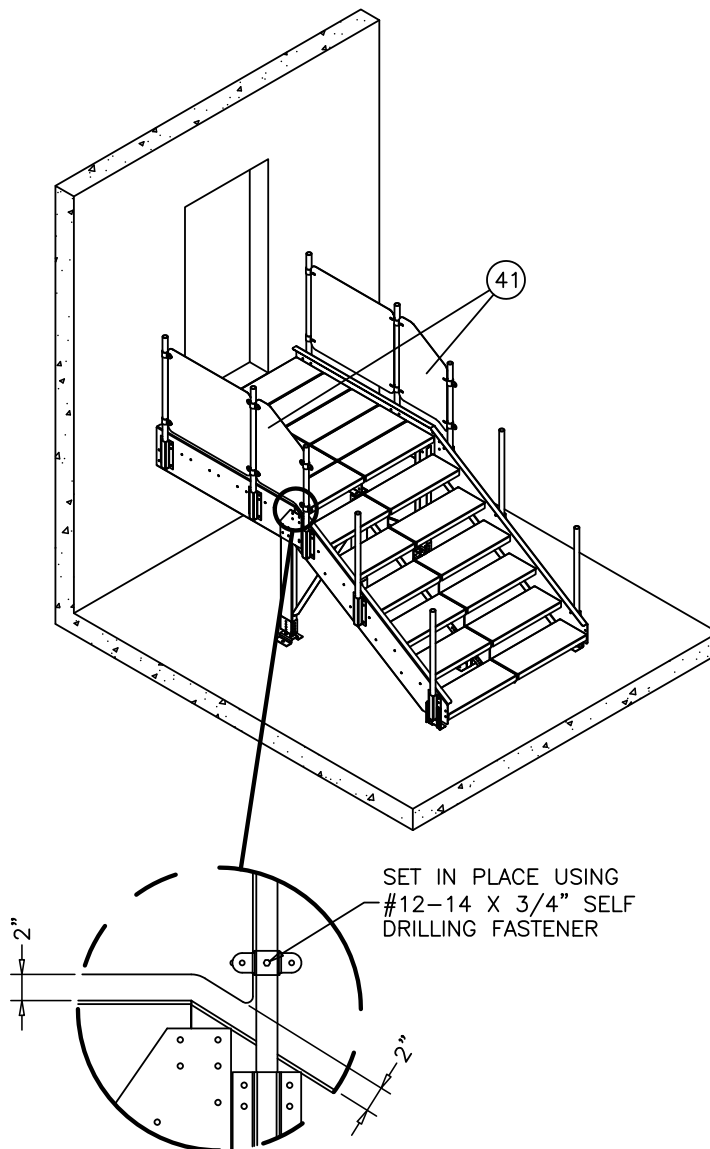


STEP 22

INSTALL HANDRAIL

PANELS (40) AS SHOWN

WITH HANDRAIL FITTINGS
ALREADY ATTACHED TO THE
PANELS, SLIDE THE FITTINGS
OVER THE HANDRAIL POSTS
AND SECURE THEM IN PLACE
SO THAT THE BOTTOM OF THE
PANEL IS 2" ABOVE THE
STRINGER

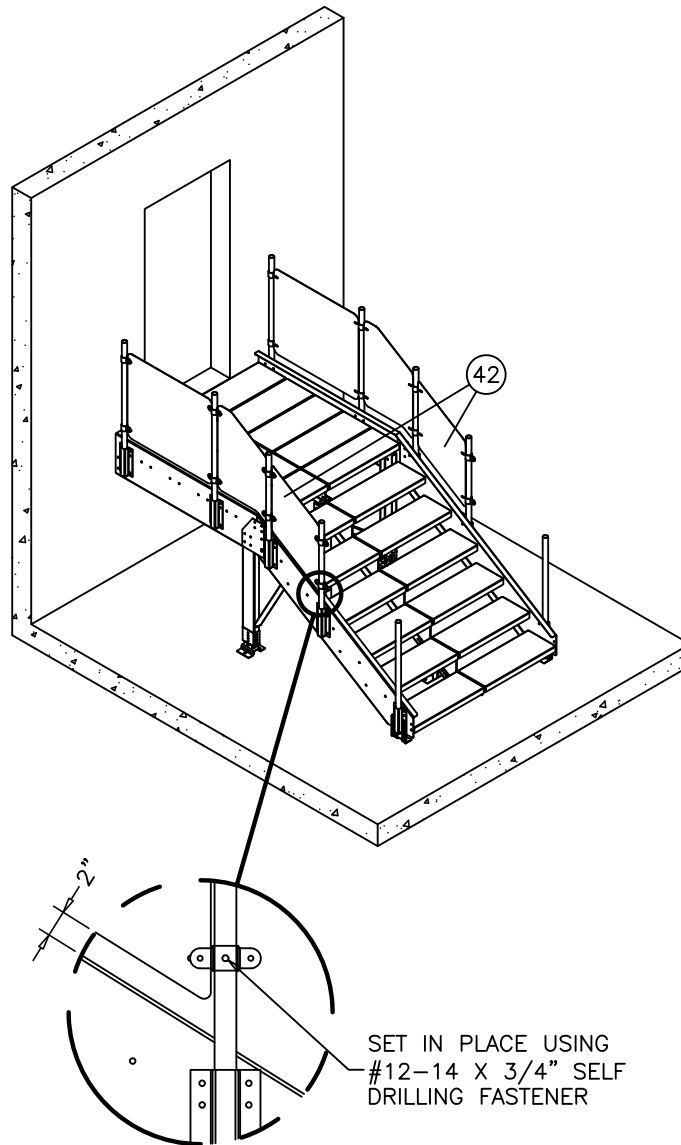


STEP 23

INSTALL HANDRAIL

PANELS (41) AS SHOWN

WITH HANDRAIL FITTINGS ALREADY ATTACHED TO THE PANELS, SLIDE THE FITTINGS OVER THE HANDRAIL POSTS AND SECURE THEM IN PLACE SO THAT THE BOTTOM OF THE PANEL IS 2" ABOVE THE STRINGER

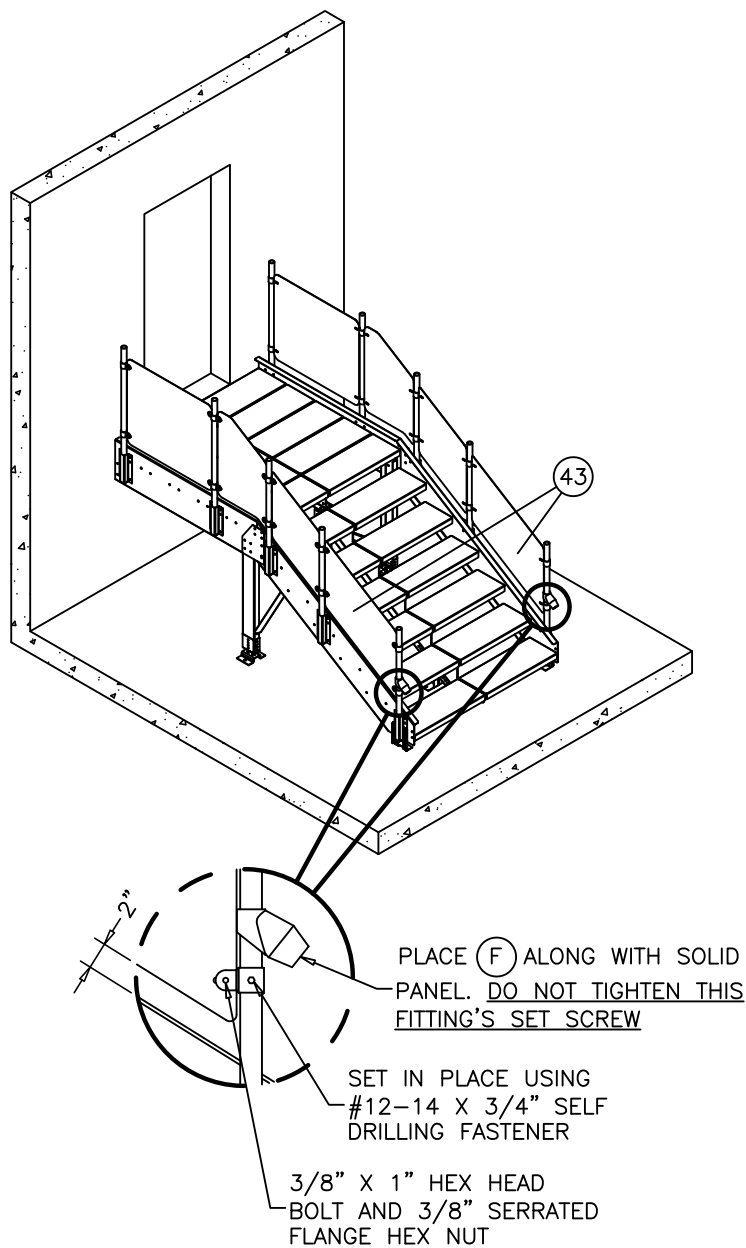


STEP 24

INSTALL HANDRAIL

PANELS (42) AS SHOWN

WITH HANDRAIL FITTINGS
ALREADY ATTACHED TO THE
PANELS, SLIDE THE FITTINGS
OVER THE HANDRAIL POSTS
AND SECURE THEM IN PLACE
SO THAT THE BOTTOM OF
THE PANEL IS 2" ABOVE THE
STRINGER



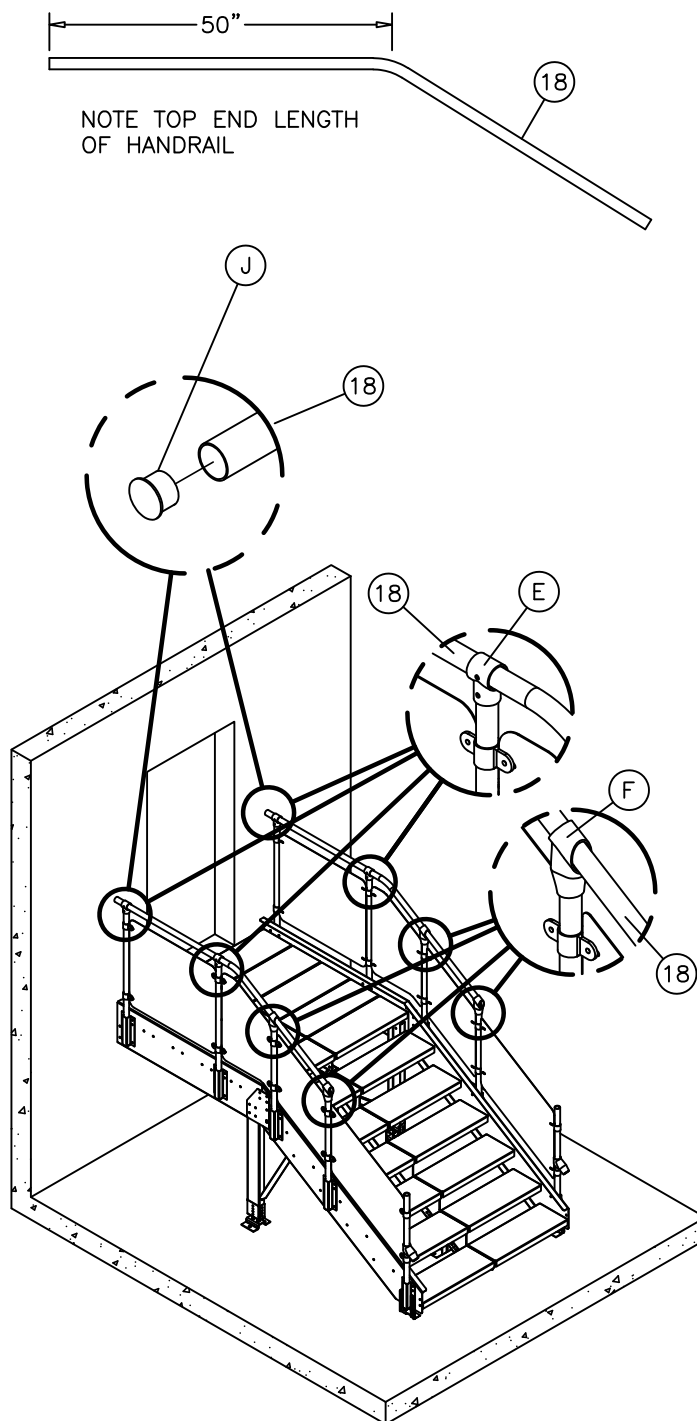
STEP 25

INSTALL HANDRAIL

PANELS (43) AS SHOWN

WITH HANDRAIL FITTINGS ALREADY ATTACHED TO THE PANELS, SLIDE THE FITTINGS OVER THE HANDRAIL POSTS AND SECURE THEM IN PLACE SO THAT THE BOTTOM OF THE PANEL IS 2" ABOVE THE STRINGER

NOTE:
CONNECTOR (F) MUST ALSO BE ADDED TO THE LOWER POST (A)



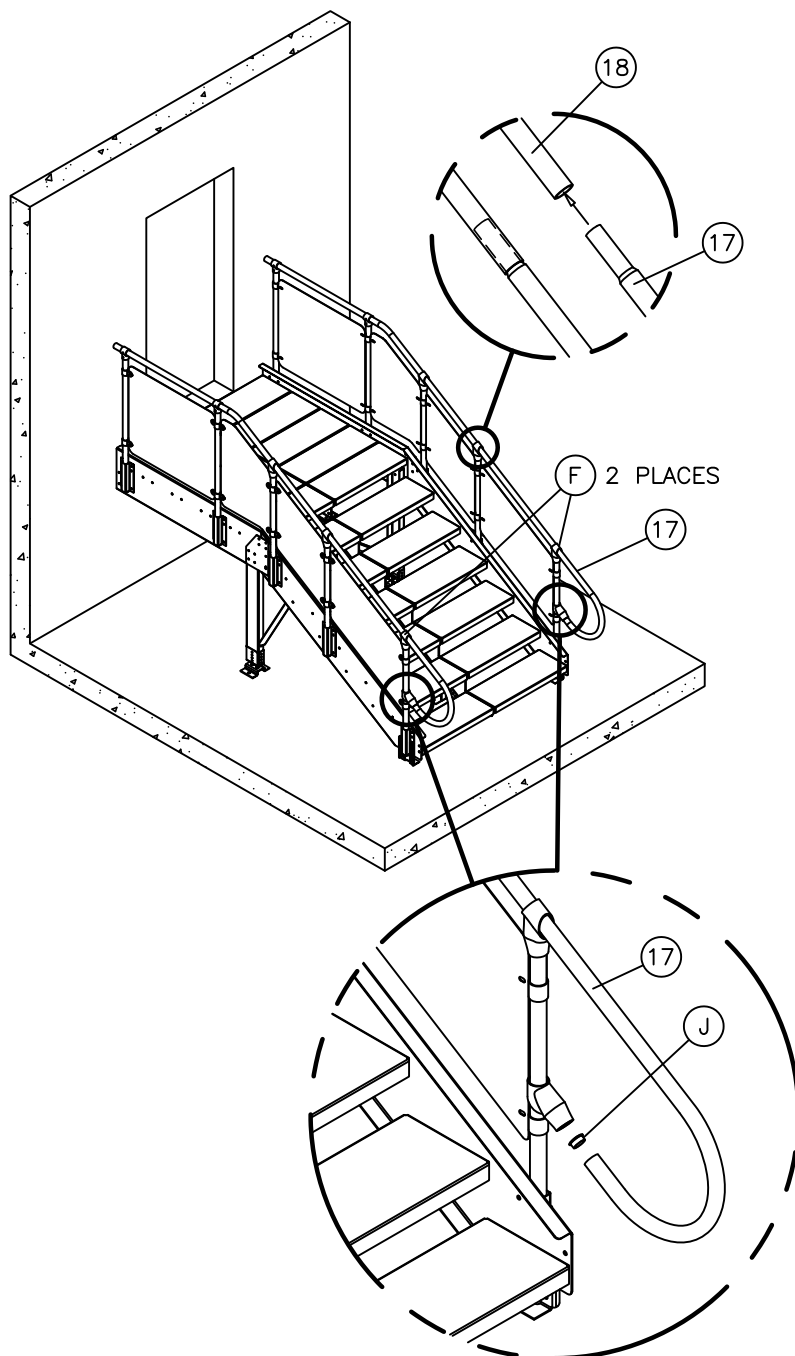
STEP 26

TOP GUARDRAIL INSTALLATION
SLIDE CONNECTOR (E) AND (F)
ONTO HANDRAIL (18) AS SHOWN
AND PLACE THEM ONTO THE
VERTICAL HANDRAIL POSTS

NOTE:

ADD END CAP (J) TO THE TOP
END OF HANDRAIL (18)

LEAVE GUARDRAIL FITTING SET
SCREW LOOSE UNTIL HANDRAIL
IS COMPLETELY ASSEMBLED



INSTALL WEATHER PLUG END CAP BEFORE
ATTACHING GUARDRAIL INTO FITTING

STEP 27

LOWER GUARDRAIL INSTALLATION

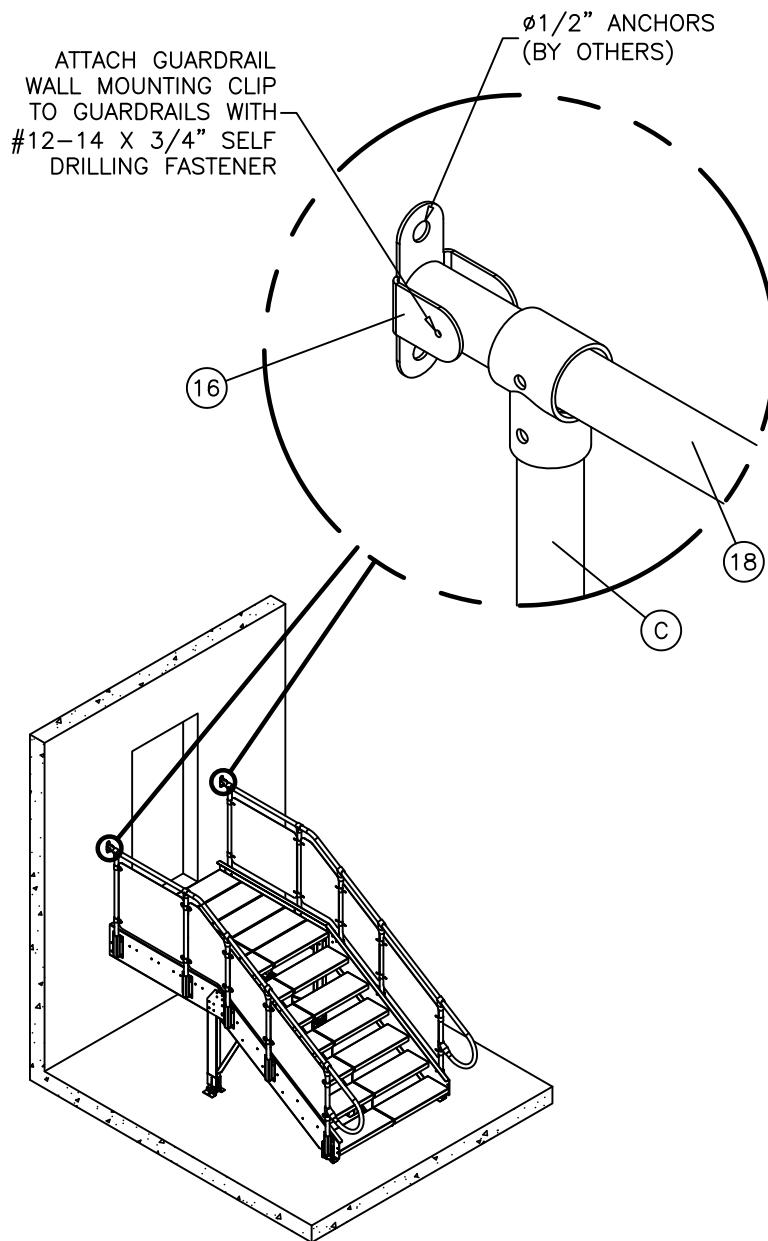
SLIDE CONNECTOR (F) ONTO
THE LOWER GUARDRAIL (17)

ADD END CAP (J) ON THE
LOWER END OF (17)

INSERT THE GUARDRAIL
TAPERED END INTO THE TOP
GUARDRAIL (18)

THE LOWER END OF (17) IS
SECURED IN CONNECTOR (F)

**TIGHTEN ALL CONNECTIONS
ONCE HANDRAILS ARE IN
PLACE**



STEP 28

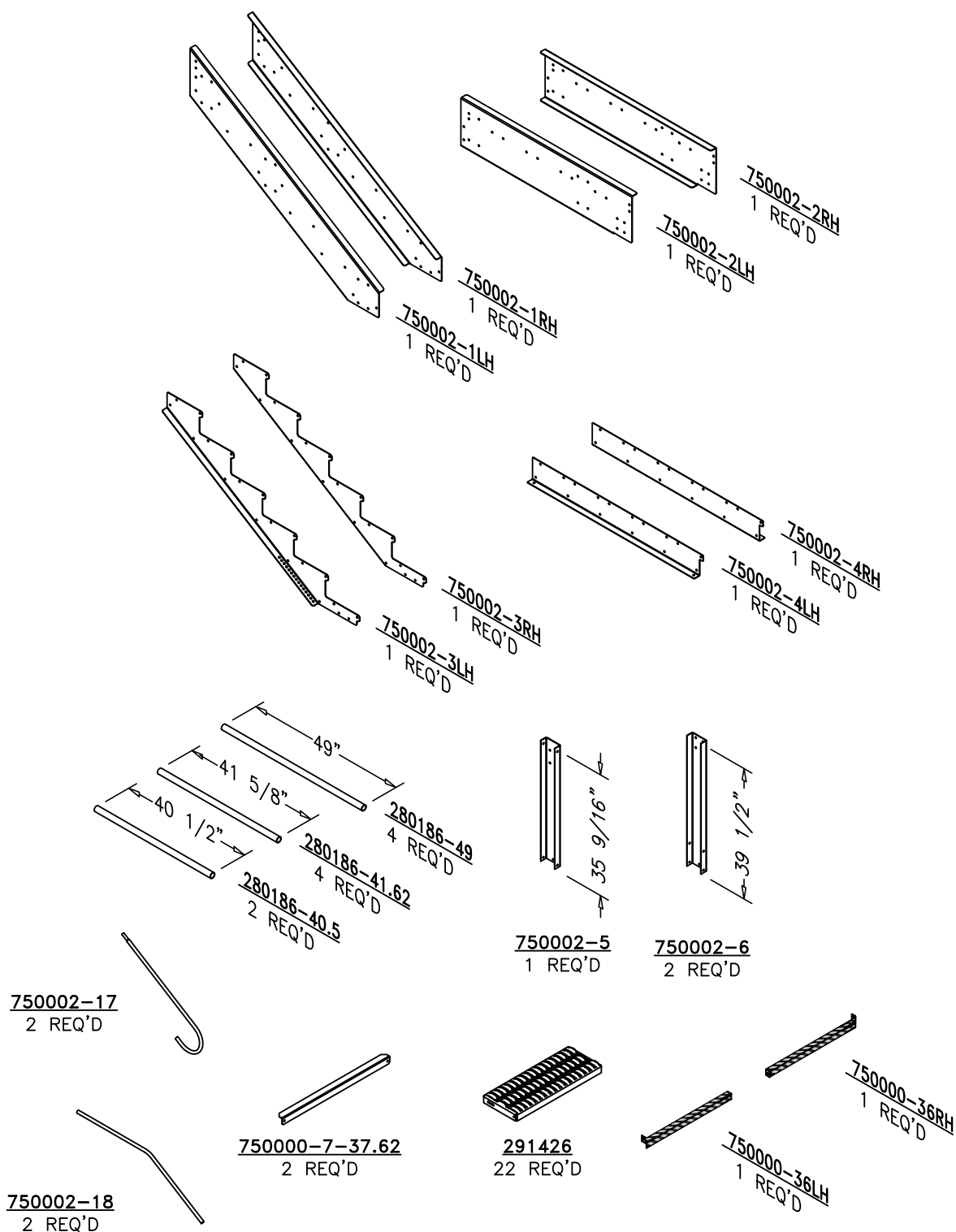
OPTIONAL GUARDRAIL WALL MOUNTING CLIP (16) PROVIDED, INSTALL AS SHOWN

ONCE BOTH HANDRAIL MOUNTING CLIPS ARE INSTALLED REVIEW ALL CONNECTIONS AND ENSURE ALL FASTENERS ARE FULLY TIGHTENED

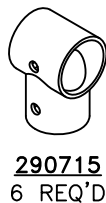
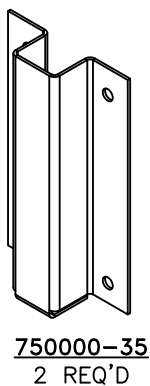
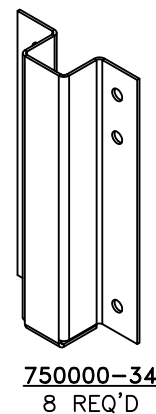
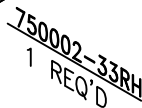
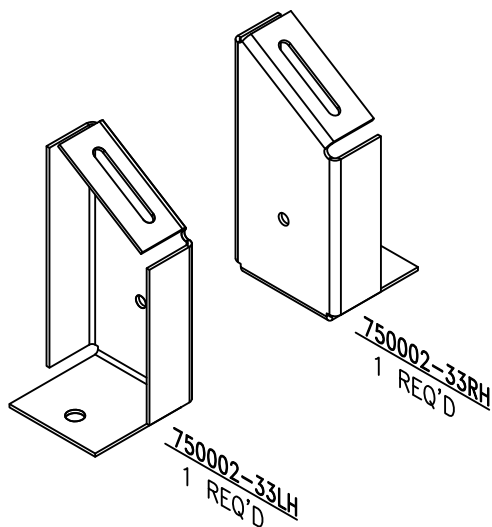
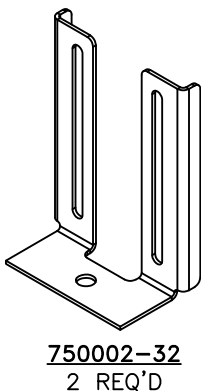
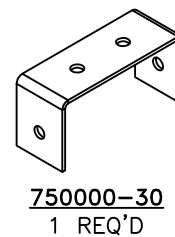
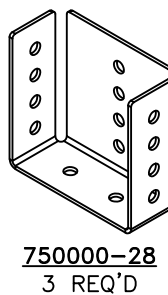
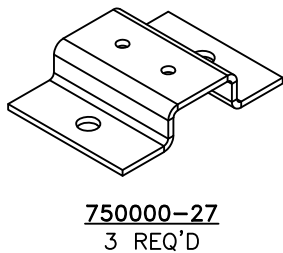
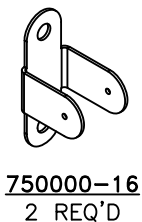
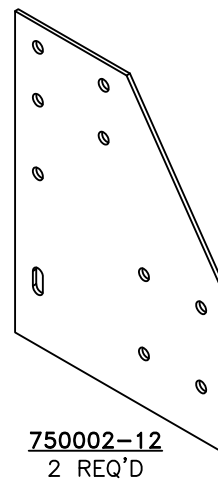
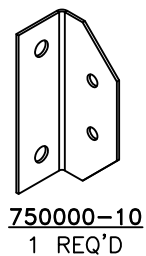
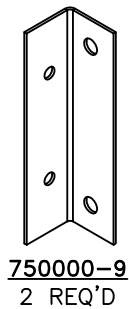
END OF INSTALLATION INSTRUCTIONS

| PARTS LIST* | | |
|-------------|----------------|---|
| ITEM | PART NUMBER | DESCRIPTION |
| 1L | 750002-1LH | STAIR STRINGER CHANNEL (LEFT HAND) |
| 1R | 750002-1RH | STAIR STRINGER CHANNEL (RIGHT HAND) |
| 2L | 750002-2LH | LANDING STRINGER CHANNEL (LEFT HAND) |
| 2R | 750002-2RH | LANDING STRINGER CHANNEL (RIGHT HAND) |
| 3L | 750002-3LH | STAIR CENTER STRINGER (LEFT HAND) |
| 3R | 750002-3RH | STAIR CENTER STRINGER (RIGHT HAND) |
| 4L | 750002-4LH | LANDING MID STRINGER SUPPORT (LEFT HAND) |
| 4R | 750002-4RH | LANDING MID STRINGER SUPPORT (RIGHT HAND) |
| 5 | 750002-5 | CENTER LANDING COLUMN X 36 9/16" |
| 6 | 750002-6 | SIDE LANDING COLUMN X 39 1/2" |
| 7 | 750000-7-37.62 | STAIR CROSS BRACE ANGLE X 37 5/8" |
| 10 | 750000-10 | LANDING TO CONCRETE WALL CLIP |
| 11 | 750000-11 | CENTER COLUMN CLIP |
| 12 | 750002-12 | STAIR STRINGER TO LANDING CHANNEL CLIP |
| 16 | 750000-16 | HANDRAIL WALL MOUNTING CLIP |
| 17 | 750002-17 | TOP GUARDRAIL WITH LOOP |
| 18 | 750002-18 | TOP GUARDRAIL WITH CORNER JOINT |
| 27 | 750000-27 | DOCK HIGH STAIRCASE COLUMN BASE PLATE |
| 28 | 750000-28 | DOCK HIGH STAIRCASE COLUMN SHOE PLATE |
| 30 | 750000-30 | CENTER COLUMN TOP CAP PLATE |
| 32 | 750002-32 | STRINGER ADJUSTABLE ANCHOR CLIP |
| 33L | 750002-33LH | MID STRINGER ADJUSTABLE ANCHOR CLIP |
| 34R | 750002-33RH | MID STRINGER ADJUSTABLE ANCHOR CLIP |
| 34 | 750000-34 | STAIR HANDRAIL CLIP |
| 35 | 750000-35 | STAIR HANDRAIL ANCHOR CLIP |
| 36L | 750000-36LH | DOCK STAIR WARNING STRIPE ANGLE |
| 36R | 750000-36RH | DOCK STAIR WARNING STRIPE ANGLE |
| 40 | 750002-40 | SOLID PANEL – LANDING |
| 41 | 750002-41 | SOLID PANEL – TRANSITION |
| 42 | 750002-42 | SOLID PANEL – UPPER STAIR |
| 43 | 750002-43 | SOLID PANEL – LOWER STAIR |
| A | 280186-40.5 | Ø1 5/8" HANDRAIL POST X 40 1/2" |
| B | 280186-41.62 | Ø1 5/8" HANDRAIL POST X 41 1/2" |
| C | 280186-49 | Ø1 5/8" HANDRAIL POST X 49" |
| D | 291426 | GRIP STRUT STAIR TREAD 11 3/4" X 2" X 30" LONG |
| E | 290715 | TYPE 10-7 – SINGLE SOCKET TEE |
| F | 291556 | TYPE 29-7 – 30'-60' SINGLE SOCKET TEE |
| G | 291682 | TYPE M50 – SINGLE |
| H | 291683 | TYPE M51 – DOUBLE |
| J | 291129 | 1 5/8" WEATHER PLUG END CAP |
| K | 290190 | #12-14 X 3/4" SELF-DRILLING FASTENER W/SW |
| L | 291292 | 3/8" X 1" SERRATED FLANGE HEX HEAD BOLT GRADE 8.2 |
| M | 291284 | 3/8" X 2 1/2" HEX HEAD BOLT W/SW GRADE 8.2 |
| N | 290961 | 3/8" SERRATED FLANGE HEX NUT |

NOTE: SOME OF THESE PARTS MAY BE PRE-ASSEMBLED INTO LARGER ASSEMBLIES



NOTE: SOME OF THESE PARTS MAY BE PRE-ASSEMBLED INTO LARGER ASSEMBLIES



NOTE: SOME OF THESE PARTS MAY BE PRE-ASSEMBLED INTO LARGER ASSEMBLIES



5400 E. Broadway Avenue
PO Box 11215
Spokane, WA 99211 USA

Phone: +1-509-535-1571
E-mail: info@SCAFCOgrain.com
www.SCAFCOgrain.com

GS3008E0919